



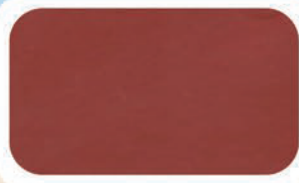
RubberFloor

CRB FLOOR PAINT



Colour Range

Also available in WHITE (63-100-AK) and BLACK (63-900-AK) colors.



TILE RED
(63-330-AK)



SAFETY GREEN
(63 -630-AK)



CRYSTAL BLUE
(63-787-AK)



SAFETY YELLOW
(63 -204-AK)



SILVER GRAY
(63-800-AK)



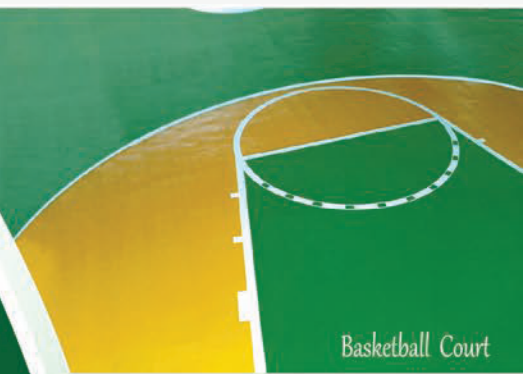
BEIGE
(63 -124-AK)

Ideal Uses

- Basketball / Badminton / Tennis Court
- Driveway
- Garage
- Playgrounds
- Parking Lots

Color chips on this card may vary slightly from the actual paint due to different application methods, surface texture, sheen and light.

*Do not use as color reference. Refer to color chart for actual shade.



Basketball Court



Driveway / Garage



Tennis Court



Parking Lot



RubberFloor

CRB FLOOR PAINT

PureCoat Premium RubberFloor CRB Floor Paint is a ready to apply lead safe quick drying floor coating based on a chlorinated rubber resin especially designed for areas requiring excellent water and chemical resistance. It has a pleasing appearance of satin finish and excellent weathering properties that it can be applied on any surfaces of wood, metal and concrete.

Physical Properties

GRIND	: 4 NS
VISCOSITY	: 85 - 95 K.U. @ 28 °C
DENSITY	: 1.24 ± 0.02 kg/liter (theoretical)

GLOSS	: 5 - 10 @ 60° micro-gloss
HARDNESS	: HB Pencil
ADHESION	: 100/100 Cross Hatch @ 2mm.
IMPACT	: 25 cm x 500 grams - no crack
FLEXIBILITY	: ½" Mandrel - no crack
PACKAGING	: 4 Liters & 1 Liter

SURFACE PREPARATION

For maximum paint performance, ensure surface to be painted must be dry and in sound condition, free from loose dirt, dust, oil, grease and other foreign matter.

HEALTH AND SAFETY INFORMATION

Keep out of children's reach. Highly flammable - keep away from open flame and extreme heat. Keep container tightly closed. Store in a cool place. Mix just enough material to use. Do not dispose in water drains. Avoid prolonged contact with skin. Wash hands with soap and water. During application, wear body protection and respiratory mask. Use only in well ventilated areas.

Technical Information

Application :

Brush, roller or spray - can be used as is for roller and brush application.

For spray application - thin down with 15% - 20% PureCoat Premium RubberFloor Reducer.

Drying Time : To touch	5 - 10 minutes
: Tack Free	15 - 30 minutes
: Hard / Recoat	1 - 2 hours
: Light Foot Traffic	16 - 24 hours
: Full Cure Time	48 hours



Sycwin Coating & Wires, Inc.

93 Joy St., Grace Village, Balingasa, Quezon City 1115 Philippines
Tel: (632) 8364-6001 to 06; 8364-5790; 3411-3491 to 93 • Fax: (632) 8364-3870
Email address: sales@sycwin.com • Web: www.sycwin.com



Like us at www.facebook.com/sycwinpaints

PF-PRF Rev. 1 February 20, 2020